

ELECTRICITY DISTRIBUTION DIVISION, BAH ESTIMATE

Name of Scheme D. P. R. S.

ABSTRACT OF COST

Estimate framed by Sub-Divisional officer J. K. S.
 Supply to farm via 11/0 KV line
 Address farm Dist. AGRA
 H. P. Peruance of sanction No. 5115 Date 25.05.23

S. No.	Work Involved	Ch. Head of No.	Unit cost	
			Total Ch. To Consumers	Total Ch. To Corp.
B. Transmission:-				
1.	11 KV line <u>150 mt.</u>	Vide Appendix No. 1	Rs. <u>35400</u>	Rs. <u>35400</u>
	Supports.			
C. Distribution:-				
2.	4.1 KV line <u>1 Km.</u>	Vide Appendix No. 2	Rs. <u>.....</u>	Rs. <u>.....</u>
	Supports.			
3.	Extra for <u>.....</u>	(As per details enclosed)	Rs. <u>.....</u>	Rs. <u>.....</u>
			Total Rs.	Rs.
4.	Fixed charges Rs. 2/- per H. P.		Rs. <u>.....</u>	Rs. <u>.....</u>
5.	System Loading Charges @ <u>.....</u> per KVA		Rs. <u>.....</u>	Rs. <u>.....</u>
Length of line chargeable to Corp. <u>.....</u> mt.				
Length of line chargeable to the consumer beyond free limit, Mt.				
(a) 25 Mt. Per H. P. Max to 300 Mt. <u>.....</u> Mt.				
Total <u>.....</u> Mt.				
Amount Payable by the consumer				
(b) Rs. <u>.....</u> /per 10 Kts. or Part thereof				
Length chargeable to him.				
C. Test station:-				
(a)	11/0 KV Sub-station/TIF <u>25</u> KVA	Vide App-3	Rs. <u>94502 = 00</u>	Rs. <u>.....</u>
(b)	Increasing Capacity from <u>.....</u> KVA		Rs. <u>.....</u>	Rs. <u>.....</u>
(c)	<u>.....</u> KVA	Vide Appendix-3	Rs. <u>4957 = 00</u>	Rs. <u>.....</u>
D. Distribution:-				
Cost of service line as per details enclosed Vide App-1			Rs. <u>1997 = 00</u>	Rs. <u>.....</u>
			G. Total Rs.	Rs.

Prepared by: J. K. S. Checked by: Checked by: Total Amount Rs. 134939 = 00

A
 S. D. O. Estimate Sanctioned to Rs. 134939 = 00 Say, 134939 = 00
 (Reason for PTW Deposit Thru wire)
 Ch Head PTW Deposit
 Ch to Consumers Rs. 134939 = 00
 Ch to UPPC Rs.
 S.No. of Year 134939 = 00

B-Transmission

17/11/16 11:07
24-4-16

Estimate for giving supply to ...

Cost of M.V. Line Length of Line 20.27 km

Sl. No.	Particulars	Unit	Rate	Qty.	Amount in Rs.
1	R.C.C. Tee Connection with L x Hairpin Substation with (Tea Channel)		4500	01 No	4500 = 0
2	R.C.C. pole 6.5 meter long	No.	2721 =	02 No	5442 = 0
3	Stone pad	No.			
4	11 Kv Steel Cross Arm 'x' Type 571/572	No.	744 =	02 No	1488 = 0
5	Cross Arm holding Clamps with Nut & Bolts	No.	304 =	02 No	608 = 0
6	11 Kv Pin Insulators	No.	268 =	06 No	1608 = 0
7	11 Kv Pin without	No.			
8	Pin socket for fixing top Insulator Nut & bolts	No.	265 = 0	02 No	530 = 0
9	Washers with Washers ACSH with 3/4 x 80	Km.	23.98	46 km	<u>11126 = 72</u>
10	Aluminium top (77-54 mm)	Kg.			
11	Aluminium landing wire (55 mm dia)	Kg.			
12	Barbed wire G.I.	Kg.			
13	Earthing complete	No.	838 =	02 No	1676 = 0
14	Extra for stays/road/Hivet/Line	No.			
15	Test/fixing Ex Concreting	No.			
16	Extra for erection Dipole complete work accessories	No.	2027	01	2027 = 0
17	Stay set complete	No.			
18	Concreting of Supports	No.			
19	Carriage	Per Km			
		Per Km			
					<u>35400 = 00</u>
20	3% Contingency				
21	15% L.P. + 31.5% O. & Charges @ 37%				
					<u>29055 = 72</u>
					<u>27027 = 00</u>

*Cost of materials
236/mile 150m/m*

29055
27027 = 00

Prepared by :

Checked by :

(Signature)

Diagram showing the arrangement in details for giving supply to
 Chhabra Ltd
 firm name
 via Anshu Ltd
 0.00 per

APPENDIX - 4

No.	Unit Nos.	Item	Qty.	Ch. to Corp.	Ch. to Consumer
No.	No.				
No.	No.		1		
No.	No.		1		
No.	No.		15m		
No.	KVA				
No.	No.				
No.	L.S.				
No.	L.S.				

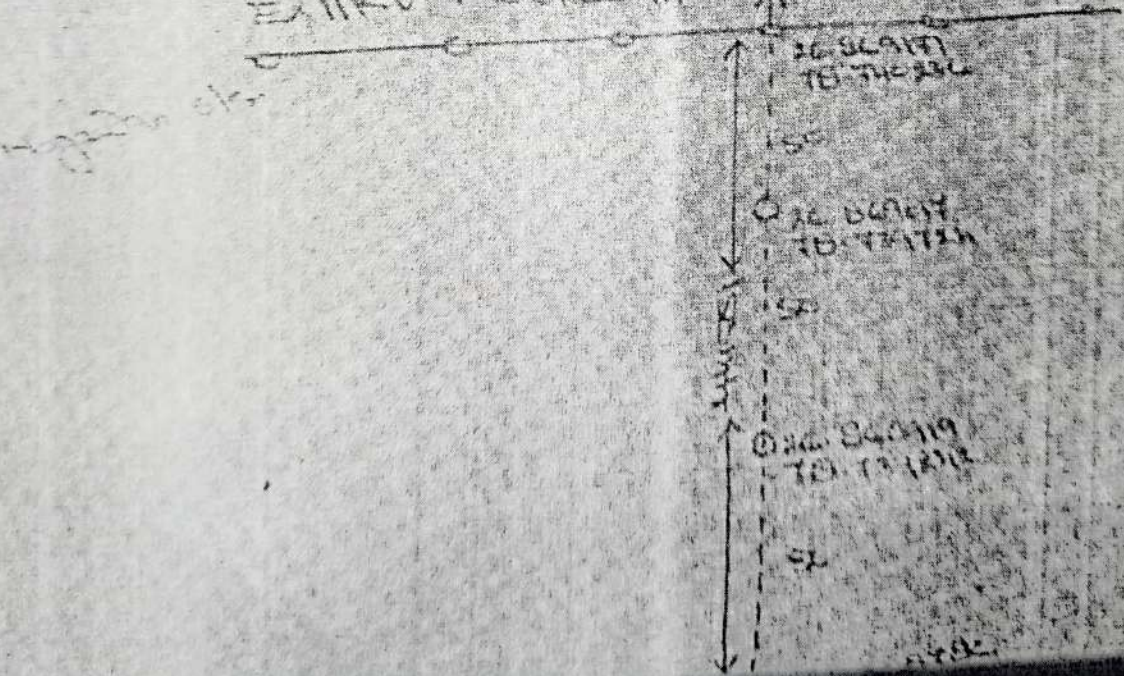


Note: Cable provided by consumer.

Total Rs. 4957.00
 Rs. /
 Total Rs. Say 4957.00

LINE CHART

11KV Medium



↓ ↓ ↓
 Provided 15 m cable for